



# KIMBERLY-CLARK\* Isolation Gowns

Featuring KC100, KC200, KC300



*If You Think the Right  
Level of Protection  
Isn't Important, Ask a  
Clinician with a MRSA  
Patient in 104, a VRE  
Patient in 218 and an  
HIV Patient in 312.*

According to World Health Organization statistics, at any given time, 1.4 million people worldwide suffer from infections acquired in hospitals.<sup>1</sup> Because organisms such as MRSA can survive as long as several months on virtually any surface with patient or healthcare worker contact, proper use of personal protective equipment (PPE) is crucial in preventing the contact transfer of infection—to patients, visitors and to fellow healthcare workers.

*AAMI guidelines are a widely accepted system of classification for protective apparel based on liquid barrier performance. That's why KIMBERLY-CLARK\* Isolation Gowns now conform to AAMI Levels 1, 2 & 3.*

Our new Isolation Gown portfolio provides barrier protection based on AAMI guidelines, and helps reduce the risk of contamination and transmission of infectious organisms which lead to HAIs. KIMBERLY-CLARK\* Isolation Gowns are all made from 3-layer SMS fabric to give clinicians the confidence and comfort they need to deliver the best possible patient care.

### The Right Protection for the Right Procedure at the Right Price

	KC100 Isolation Gown Level 1	KC200 Isolation Gown Level 2	KC300 Isolation Gown Level 3
<b>AAMI Level / Performance Requirements at 4% AQL</b>	Spray Impact Penetration ≤ 4.5g	Spray Impact Penetration ≤ 1.0g Hydrostatic Pressure ≥ 20cm	Spray Impact Penetration ≤ 1.0g Hydrostatic Pressure ≥ 50cm
<b>Anticipated Risk of Exposure to Fluid</b>	Low	Between Low and Moderate	Moderate
<b>Gown Characteristics (Weight)</b>	Light-weight SMS fabric	Medium-weight SMS fabric	Heavy-weight SMS fabric
<b>Recommended Areas of Use†</b>	Med/Surg Laundry Housekeeping	ICU Med/Surg Dialysis Nursery Lab Pathology Laboratories Hyperbaric	ER Trauma Burn Units Critical Care Units
<b>Recommended Tasks†</b>	Transporting Patients Basic Patient Care	Blood Draw Suturing Inserting I.V. Lines	Drawing Arterial Blood Inserting I.V. Lines

†Recommended areas and tasks are based on feedback from a research panel of 300 Registered Nurses, Infection Control Practitioners, and Materials Managers. Ultimately, the health care personnel using these gowns must make the final decision on which level of protection is appropriate, given the anticipated risk of fluid exposure.



Trusted Clinical Solutions\*

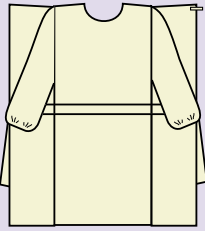
*Featuring KC100, KC200, KC300*



**KIMBERLY-CLARK® Protective  
3-Layer SMS Fabric:**

**Outer layers**—Cloth-like, yet tough and abrasion-resistant

**Middle layer**—Intricate web of microfibers that filters out many water-based liquids



The entire gown is a Critical Zone including seams, but excluding cuffs, hems and bindings. AAMI also requires a closed back for isolation precautions



Custom neck tapes on our Isolation Gowns make it easy to identify their AAMI Level of Protection.

1. [http://www.who.int/features/factfiles/patient\\_safety/en/index.html](http://www.who.int/features/factfiles/patient_safety/en/index.html)

**The KIMBERLY-CLARK ADVANTAGE®**

- KNOWLEDGE NETWORK® Accredited Education
- Ongoing Customer Support
- Expert Sales Force
- Tools & Best Practices
- Clinical Research
- Commitment to Excellence Guarantee

Infection prevention website:

[www.HAIwatch.com](http://www.HAIwatch.com)



For more information, please call your sales representative, or visit our web site at [www.kchealthcare.com](http://www.kchealthcare.com).

\*Registered Trademark or Trademark of Kimberly-Clark Worldwide, Inc. The COLOR ORANGE and COLOR PURPLE are Registered Trademarks of KCWW. ©2008 KCWW.

**Here are the new codes for the KIMBERLY-CLARK®  
Isolation Gown Portfolio:**

Code	Description	Dimensions (") <small>(Chest Width/Gown Length/Sleeve Length)</small>	Quantity
<b>KC300 Isolation Gown</b>			
54300	KC300 Isolation Gown, Yellow, Large	26/46/22.25	100 eaches/case
54301	KC300 Isolation Gown, Yellow X-Large	30/50/24.5	100 eaches/case
54310	KC300 Isolation Gown, Blue, Large	26/46/22.25	100 eaches/case
54311	KC300 Isolation Gown, Blue, X-Large	30/50/24.5	100 eaches/case
<b>KC200 Isolation Gown</b>			
69979	KC200 Isolation Gown, Yellow, Large	26/46/21	100 eaches/case
69988	KC200 Isolation Gown, Yellow, X-Large	30/50/24.5	100 eaches/case
69981	KC200 Isolation Gown, Blue, Large	26/46/21	100 eaches/case
69987	KC200 Isolation Gown, Blue, X-Large	30/50/24.5	100 eaches/case
<b>KC100 Isolation Gown</b>			
54100	KC100 Isolation Gown, Yellow, Large	26/46/22.25	100 eaches/case
54101	KC100 Isolation Gown, Yellow, X-Large	30/50/24.5	100 eaches/case
54110	KC100 Isolation Gown, Blue, Large	26/46/22.25	100 eaches/case
54111	KC100 Isolation Gown, Blue, X-Large	30/50/24.5	100 eaches/case

**The following codes have been discontinued:**

Code	Description	Quantity
69978-77	CONTROL® Cover Gown, Yellow, X-Large	40 eaches/case
69980-37	CONTROL® Cover Gown, Blue, X-Large	40 eaches/case
69983-70	CONTROL® Cover Gown, White, Universal Size	100 eaches/case

**Important: All other Isolation and Film Gown codes will remain the same.**



**Kimberly-Clark**

*Trusted Clinical Solutions\**